



Historic England

## Understanding Designations



Dr Caroline Skinner, Listing Team Leader  
Historic England - East of England Region



# Historic England

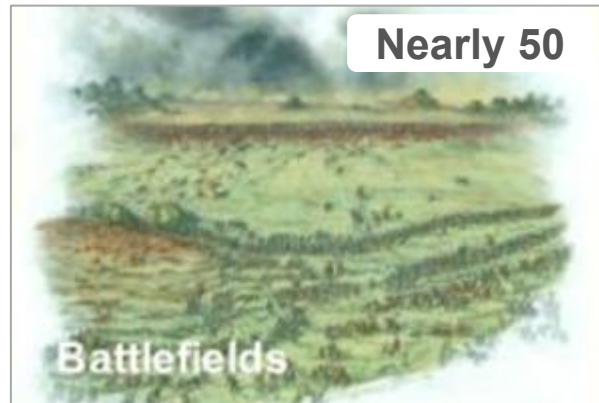
- National Heritage List for England (NHLE)
- Registration - what is it and how we assess sites.
- Listing
- Scheduling
- Questions



Cambridge Botanic Gardens – LE 1000612

# National Designation – what do we mean?

## The National Heritage List for England (also known as ‘the List’)





# REGISTERING PARKS & GARDENS

‘Register of Historic Parks and Gardens of special historic interest in England’ est. 1983;

Administered by Historic England (not DCMS);

Registration assesses the *special historic interest* of a designed landscape.

Currently over 1,650 sites registered at:

- \* Grade II: ‘of special interest’
- \* Grade II\*: ‘of *more* than special interest’
- \* Grade I: ‘of *exceptional* special interest’



Belle Vue Park, Lowestoft, registered at Grade II in 2002.



Historic England

# Rural Landscapes

Register of Parks and Gardens Selection Guide



Historic England

# Urban Landscapes

Register of Parks and Gardens Selection Guide



Historic England

# Landscapes of Remembrance

Register of Parks and Gardens Selection Guide



Historic England

# Institutional Landscapes

Register of Parks and Gardens Selection Guide





# REGISTERING PARKS & GARDENS

Key factors to consider:

- Date and period;
- Influence;
- Early or representative example;
- Work of a designer of national importance;
- Associations;
- Group value.



Somerleyton Park Registered at Grade II\* in 1984  
Somerleyton Hall Listed at Grade II\*



Historic England

C13 or earlier, good documentation and survives unencumbered by later development.



John Norden's map of Staverton Park, 1600-1 (Suffolk Archives (Ipswich) V5/22/1).

## Staverton Deer Park C13 or earlier

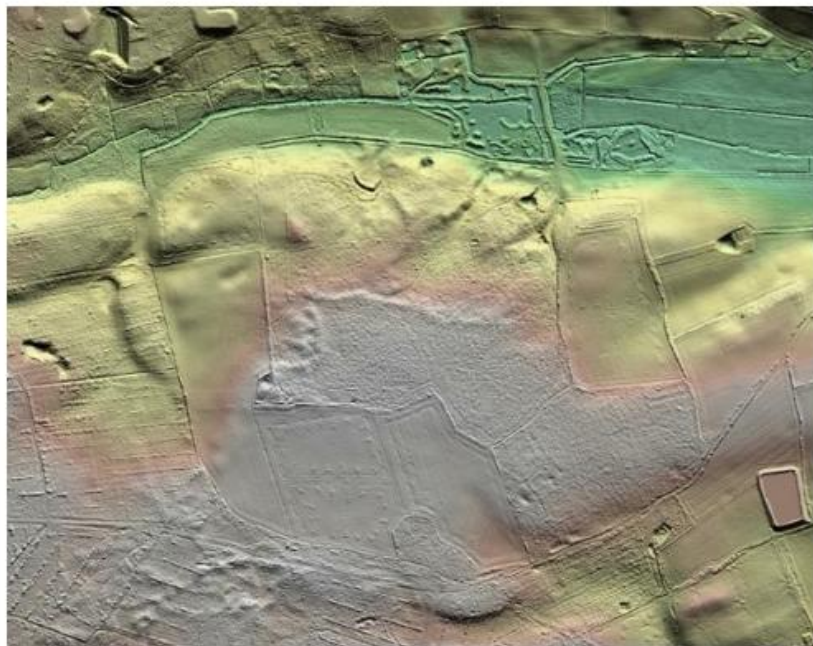


Isaac Johnson's 1805 finished map of Staverton Park (private collection): names *Staverton Park*, *Arable* (in park), *Great Staverton Walk*, *Little Staverton*, *Little Staverton Walk*. Marks two paths through the park, one from Wantisden to Woodbridge, and another from Wantisden to Butley Abbey. 'The outside Fences dotted red and those against the road belong

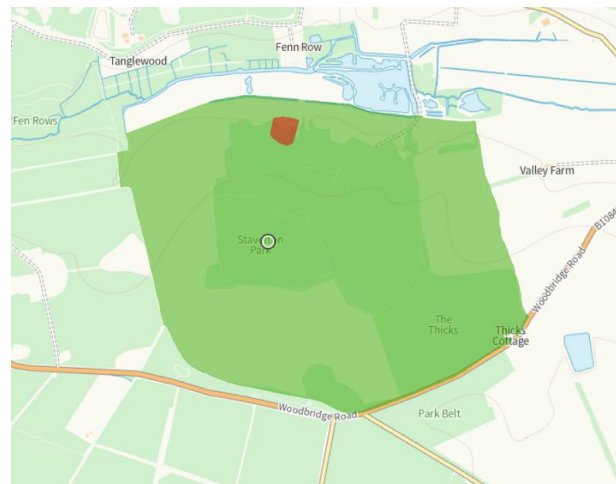




# Historic England



Lidar map of Staverton Park



John Norden's 1600-1 map overlain on a modern Ordnance Survey map.





Historic England





Historic England

## REASONS FOR DESIGNATION DECISION

Staverton Deer Park, dating to 1268 or earlier is Registered at Grade II\* for the following principal reasons:

### Historic interest:

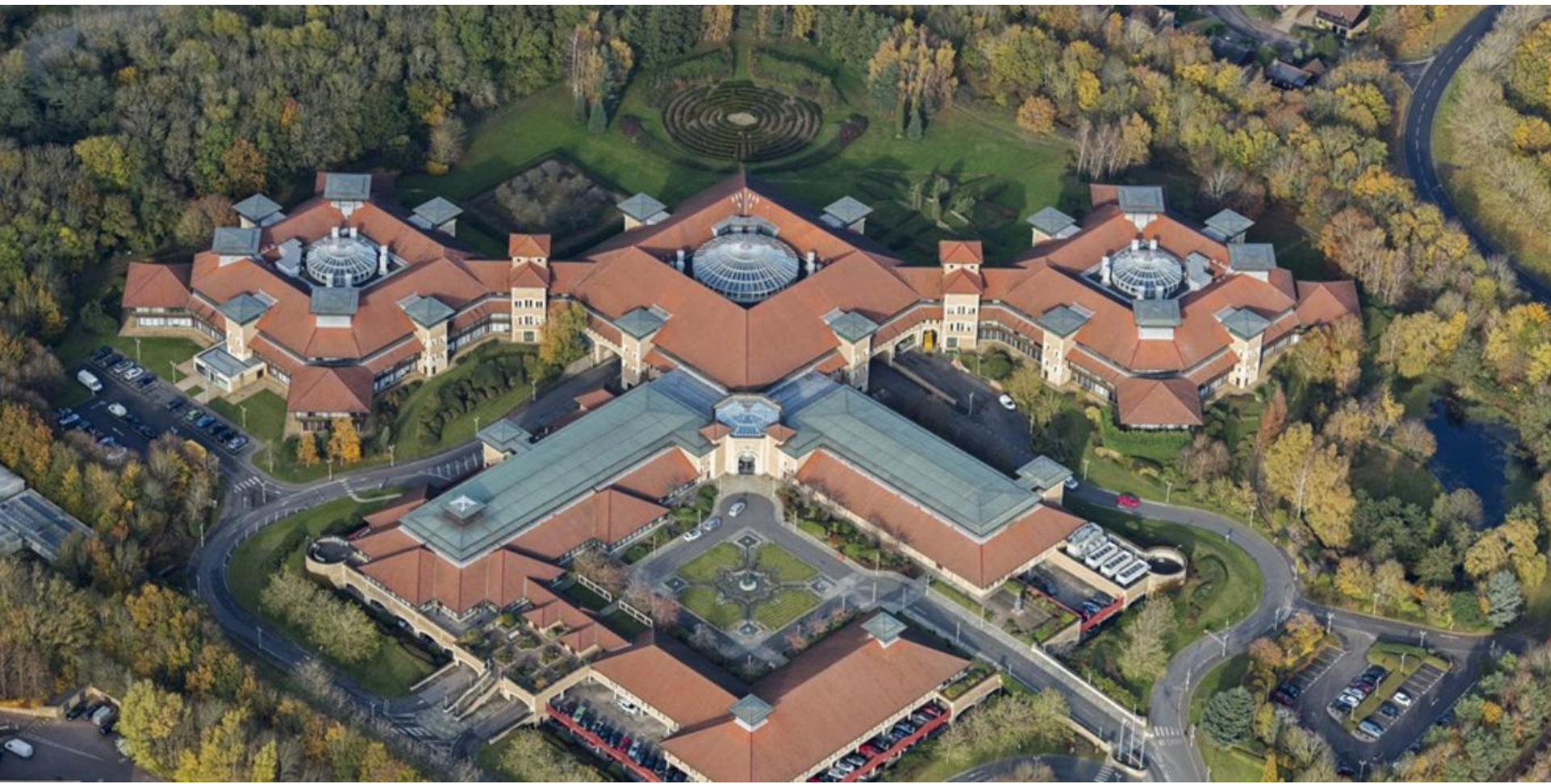
- \* as an early and rare surviving example of a medieval deer park unencumbered by later changes;
- \* for its unusual function, originating as a shared resource, apparently independent of a large country house;
- \* for its continued use as a deer park, managed in much the same way for over 700 years;
- \* for the survival of woodland pasture habitat and the density, character and age of veteran trees, many of which are more than 400 years old and are pollards last cut in the C18;
- \* for its historic and cultural significance from at least the C13 to the present day.

### Group value:

- \* for the strong group value the park holds with the scheduled monument of Cumberland's Mount which is believed to have had a specialist function in deer management.



Now for something completely different!



The Pearl Centre nr Peterborough









Historic England

## Reasons for registration:

- **Special historic interest:**
  - Design by Prof. Arnold Weddle;
  - Rare example.
- **Design Interest:**
  - Creative reworking of a familiar formal language;
  - Architectural quality;
  - Recreational value.
- **Group value:**
  - Pearl Centre (listed G II)
  - War memorial (listed G II\*)





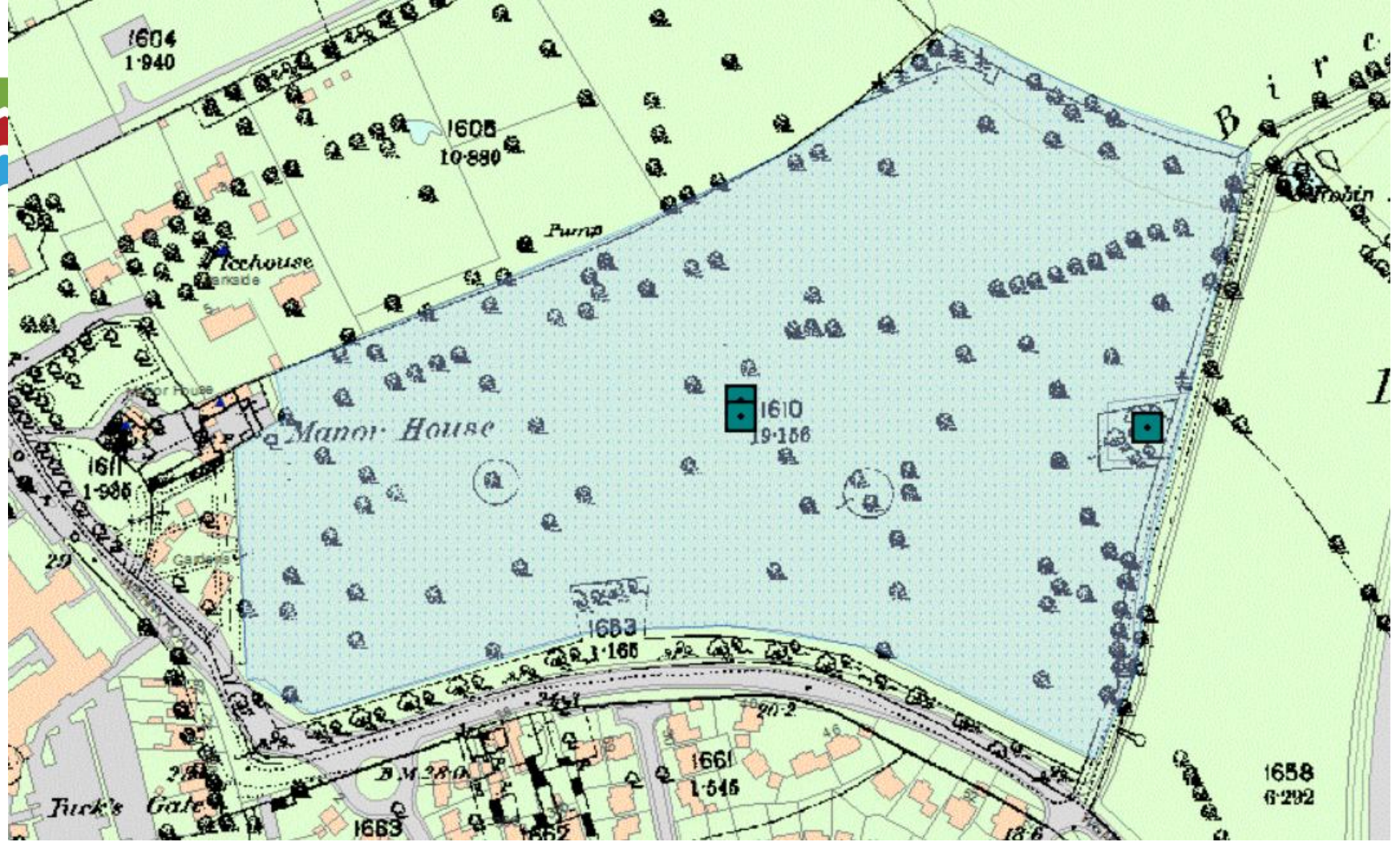
Historic England

## Reasons for Registration

- \* for their design by Professor Arnold Weddle, an accomplished landscape designer and influential lecturer of landscape architecture;
- \* as a rare example of a highly designed landscape associated with a contemporary commercial office building.
- \* as a highly creative re-working of a familiar formal language, executed with masterful handling of form and function;
- \* for the architectural quality of the landscape design, which is intimately connected with and complements the Post-Modern design of the Pearl Centre by Chapman Taylor Partners;
- \* for the recreational value of the grounds and gardens, which were designed for the enjoyment of staff relocated from the company's London headquarters, both in views from the building and for lunchtime perambulation.
- \* strong group value with the Pearl Centre, designed by Chapman Taylor Partners and built between 1989 and 1992 (listed at Grade II) and a war memorial to the employees of the Pearl Assurance Company who fell in the First and Second World Wars, designed by Sir George James Frampton RA (listed at Grade II\*).

When we registered the gardens in 2019, they were the youngest registration on the List, with only 30 years since ground was broken in 1989.

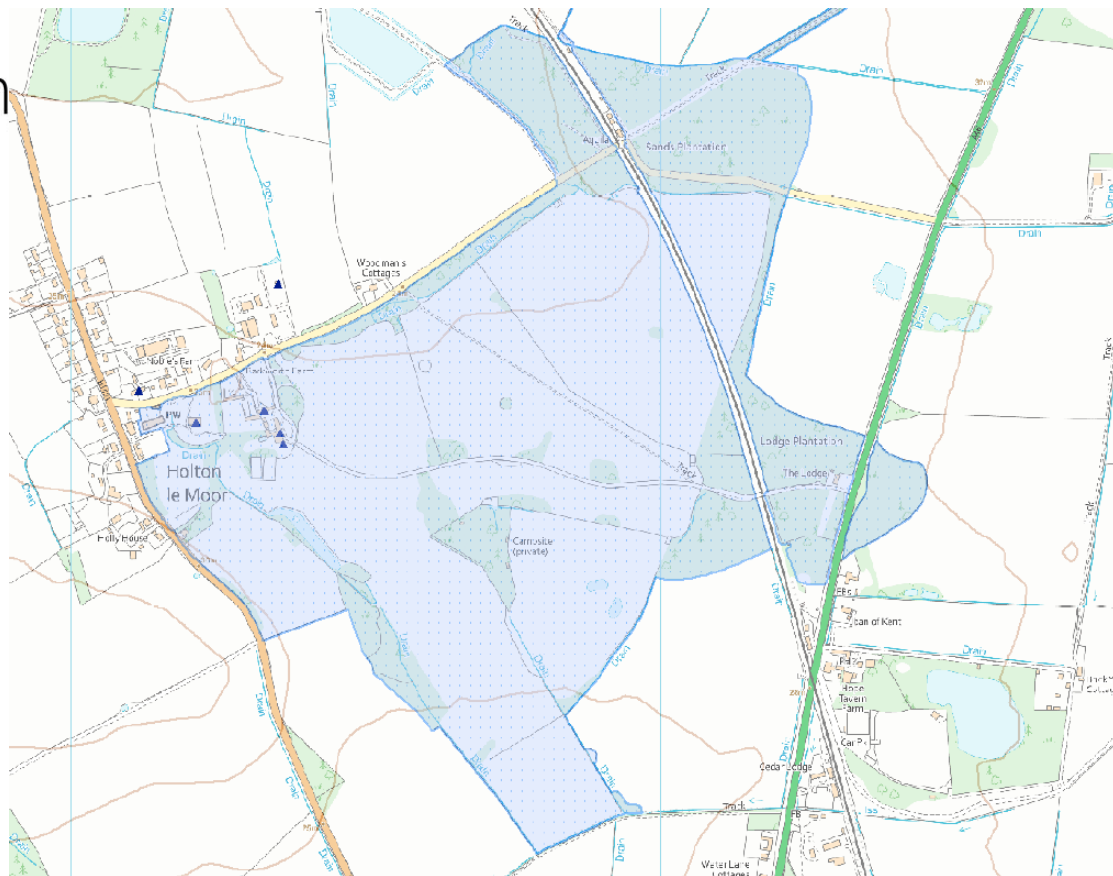




Recent example of a Reject at Initial Assessment –  
Wenny Meadow nr Chatteris



## Historic En



Recent example of a Do Not Register (full assessment)  
Holton Le Moor, Lincolnshire Parks and Gardens project



# LISTING BUILDINGS

‘Principles of Selection for Listed Buildings’,  
DCMS (2018).

Statutory criteria for listing:

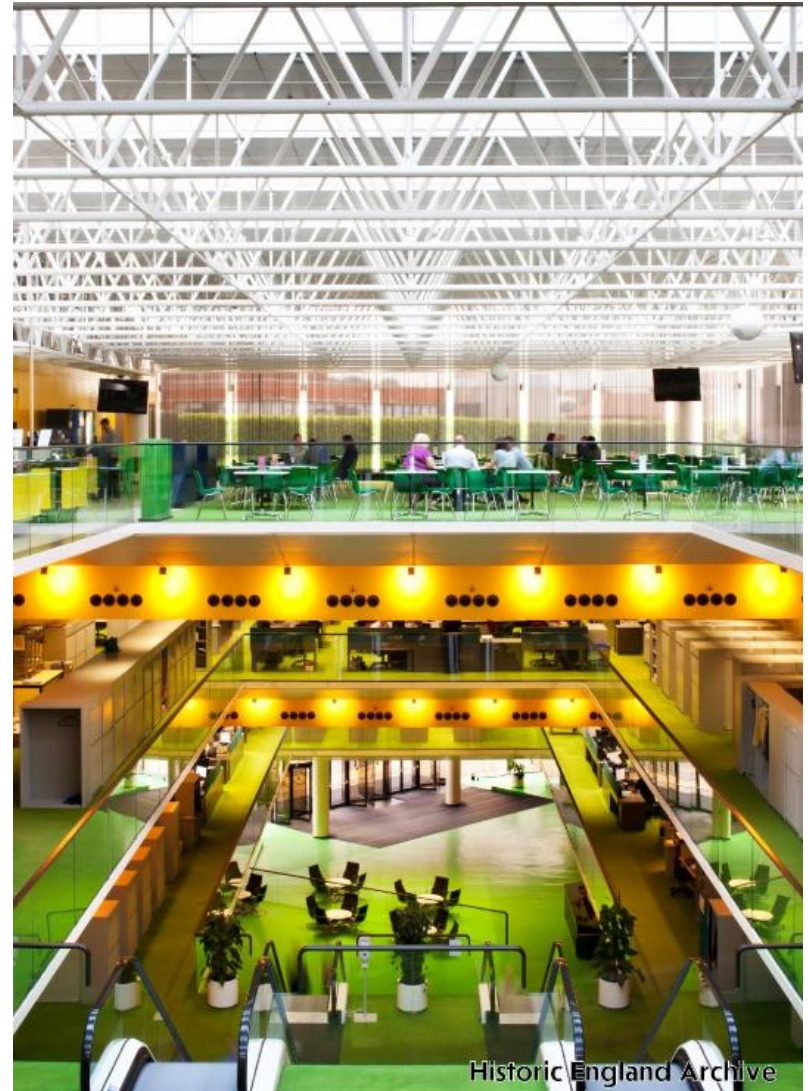
- \* Special architectural interest;
- \* Special historic interest.

Key factors to consider:

- \* Age & rarity;
- \* Aesthetic merits;
- \* Selectivity;
- \* Regional and national interest;
- \* Historic interest.

3 Grades:

- \* Grade II: ‘of special interest’ (91.7%)
- \* Grade II\*: ‘of *more* than special interest’ (5.8%)
- \* Grade I: ‘of *exceptional* special interest’ (2.5%)



Historic England Archive

Willis Building, Ipswich, (1970-75) by Norman Foster, Listed at Grade I



# Historic England



## Garden and Park Structures

Listing Selection Guide



## Agricultural Buildings

Listing Selection Guide



## Places of Worship

Listing Selection Guide



## Commemorative Structures

Listing Selection Guide







Historic England



Willis Building, Ipswich, (1970-75) by Norman Foster, Listed at Grade I



# Historic England

Office building, designed by Foster Associates for Willis, Faber and Dumas 1970-75. Built of reinforced concrete frame with bronzed glass cladding and a turf covering to a flat roof, the latter with a hedge slightly set back from the perimeter.

## **Reasons for designation:**

Architectural Interest:

- \* exceptional as the first large, multi-level building by one of Britain's most significant modern architects hailed internationally shortly after completion and recognised by architectural awards;
- \* Architectural Innovation: attested by the curvilinear glass curtain walling that reflects the surrounding buildings, the flexible and humane open office plan, and the first use of escalators in an office building;
- \* Structural engineering: the application of a cantilevered flat plate, and perimeter columns to suspend the glass curtain wall, and environmentally-aware engineering, contributes to the exceptional interest of the building;
- \* Materials: used at both the exterior and interior are thoughtfully selected and deployed to enhance the overall design;
- \* Intactness: although there have been some minor alterations, generally by Foster Associates, the architectural interest of the building has not been compromised. The building remains largely intact, including the decorative scheme;
- \* Fitness for purpose: the building continues to satisfy the original brief which asked for a distinguished building that would provide an office environment sympathetic to human values.

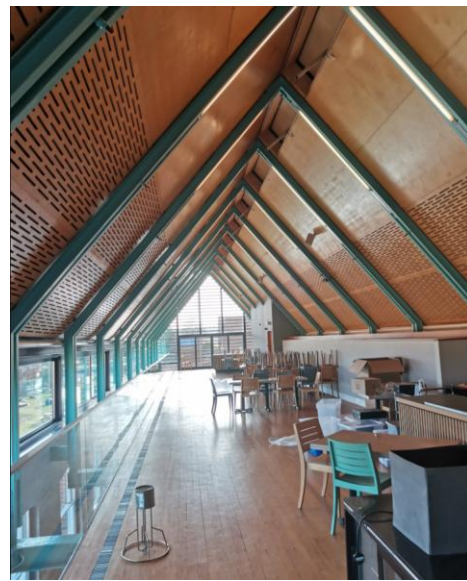




Historic England



Snape Maltings Concert Hall and River View Café -  
Listed at Grade II\*







# Historic England

- **REASONS FOR DESIGNATION DECISION**

- The Snape Maltings Concert Hall and River View Café is Listed at Grade II\* for the following principal reasons:

- Architectural Interest:

- \* as an inspirational adaptation of the C19 industrial maltings resulting in an exceptional engineering, acoustic and architectural composition which retains its original industrial aesthetic;
- \* for the design of the auditorium which acoustically is considered one of the finest in the world;
- \* as a major conversion by Arup Associates, a highly acclaimed architectural practice of the C20 but particularly Derek Sugden who went on to establish Arup Acoustics;

- Historic Interest:

- \* for the direct association with Benjamin Britten a central and influential figure in C20 British music who understood the complexities of the site, the architectural process needed in the conversion and the need for a clear brief;
- \* for the contribution to the national and international success of Snape Maltings as a centre for music excellence and a cultural destination.

- Group value:

- \* for its strong group value with other listed buildings on the Snape Maltings site, including the complex of former malting buildings fronting Snape Bridge Road, Snape Bridge House, former Granary and the Britten Pears building all listed at Grade II.

# SCHEDULING MONUMENTS

Principles of Selection for Scheduled Monuments,  
DCMS (2013) assess *national importance*:

- \* level of archaeological interest;
- \* historic interest.

Key factors to consider:

- \* Period
- \* Rarity / scarcity
- \* Documentation
- \* Group Value
- \* Survival
- \* Fragility / vulnerability
- \* Diversity
- \* Potential

Over 200 categories of monument are represented  
on the List.

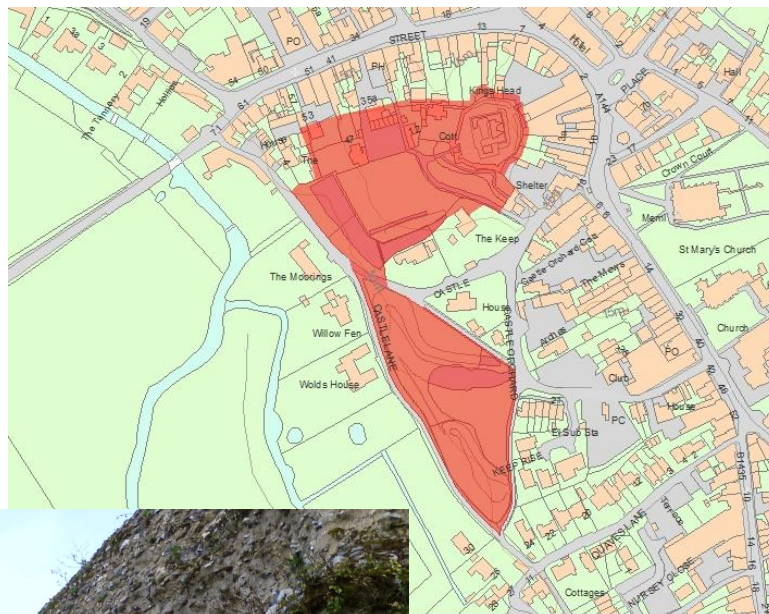


Bungay Castle - The first monument in Suffolk  
to be scheduled in 1913.





# Historic England



**Dual designation**



# Historic England



## Gardens

Scheduling Selection Guide



## Settlement Sites to 1500

Scheduling Selection Guide



## Religion and Ritual Post-AD 410

Scheduling Selection Guide



## Commemorative and Funerary

Scheduling Selection Guide



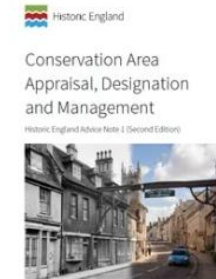




# Historic England

## Not everything that is important or significant will be designated!

- Local lists
- Conservation Areas
- HERs
- Heritage Gateway



### Historic Environment Records (HERs)

Published 13 February 2015

This is a brief guide to help you access the wealth of information on archaeology and the historic built environment held within a national network of local Historic Environment Records (HERs).

HERs are an important starting point for anyone interested in the archaeology, built heritage, and history of an area. They can provide information on a wide variety of buildings and sites, from finds of prehistoric flint tools to medieval crosses and Second World War pillboxes.

HERs are a primary source of information for planning, development control, work, and land management.



### Heritage Gateway Improvement

Published 1 July 2021 Updated 28 May 2025

In line with M4S Principle 5: The national overview of records about the historic environment should continue to be delivered online through the Heritage Gateway. Historic England in partnership with data providers is currently developing a new and better Heritage Gateway.

In replacing the existing [Heritage Gateway](#) we are working with our stakeholders to create a more reliable and efficient website by making the best use of modern technologies.

It will be a single, searchable data store that will offer reliable consistent searching across all datasets and will be accessed through redesigned search pages on the Historic England website.

- The Heritage Gateway is the only place where you can search across national and local Historic Environment Records (HERs) datasets to find an overview of England's historic environment.

The new Heritage Gateway is expected to launch in BETA version later in 2025 on the Historic England website.



Historic England

Any questions?

Historic England Website – [Historicengland.org.uk](http://Historicengland.org.uk)

General listing queries:

[ApplicationsEast@HistoricEngland.org.uk](mailto:ApplicationsEast@HistoricEngland.org.uk)

Planning / development advice queries: [e-east@HistoricEngland.org.uk](mailto:e-east@HistoricEngland.org.uk)

Other general queries: [eastofengland@historicengland.org.uk](mailto:eastofengland@historicengland.org.uk)