

Conservation Cases Round Up



Daniel Bowles
Assistant Conservation Casework Manager



www.thegardenstrust.org



@thegardenstrust

Conservation Officers' Updates

- **Hulton Park**
 - 18 Hole Championship Golf Course
 - Golf resort and academy
 - Holiday accommodation
 - Housing
- **Belford Hall**
 - Golf and sports facilities
 - Housing
 - Retail
 - Holiday accommodation



www.thegardenstrust.org



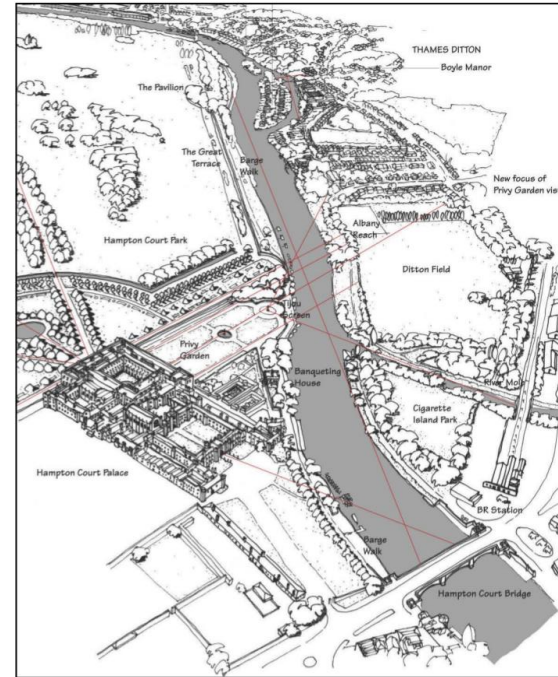
@thegardenstrust

Conservation Officers' Updates

- **Hampton Court Station Redevelopment Area and Cigarette Island Park**
 - 97 dwellings
 - 84 bedroom hotel
 - Retail
- **Hampton Court Estate Units 1 & 2**
 - Residential units
 - Office spaces



www.thegardenstrust.org



@thegardenstrust

Conservation Officers' Updates



Montagu Evans/Miller Hare TVIA View 5



www.thegardenstrust.org



@thegardenstrust

Conservation Officers' Updates



Extract wireline from above Privy Garden
for Units 1 & 2 development

Identifying themes in conservation casework

- Draws out current trends in applications and threats to designed landscapes.
- Explains the GT/CGT's roles in responding to planning consultations.
- Highlights the impact our responses have.
- Raises awareness of the how developments can impacts designed landscapes.



www.thegardenstrust.org



@thegardenstrust

Glamping

- Rise in popularity of the 'staycation'
- Diversity of glamping proposals
 - Shepherd's huts
 - Building conversions
 - Campsites.
- Economic benefits of glamping proposals.
- Can these proposals help to protect historic parkland?



Telecommunications Masts

- **Proposals reflecting infrastructure changes**
- **Grimsthorpe Castle, Lincolnshire**
 - Public benefit vs. designed landscape?
- **Norwich City Cemetery**
 - Infrastructure's impact on the environment
- **Royal Botanic Gardens, Kew**
 - Wider heritage implications



Developments encroaching into Registered Parks and Gardens

- **Outline applications**
- **Belford Hall, Northumberland**
- **Wrest Park, Bedfordshire**
 - 3850 residential units
 - Retail
 - Hotel
 - Solar park
- **Prestwold Hall, Leicestershire**
 - 56 dwellings
 - Public space



Prestwold Hall



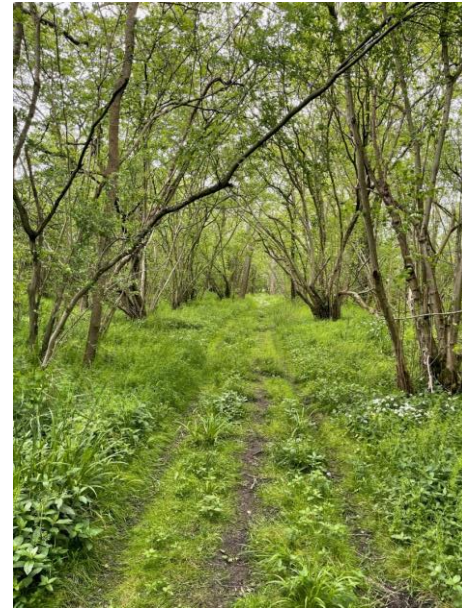
www.thegardenstrust.org



@thegardenstrust

Developments encroaching into Registered Parks and Gardens

- **Urbanising impact**
- **Access to historic parkland**
 - Rights of Way
 - Altering historic connection to the landscape
- **Visual impact**
 - The question of tree coverage
- **Concerns within the planning stages**



Developments encroaching into Registered Parks and Gardens



www.thegardenstrust.org



@thegardenstrust