



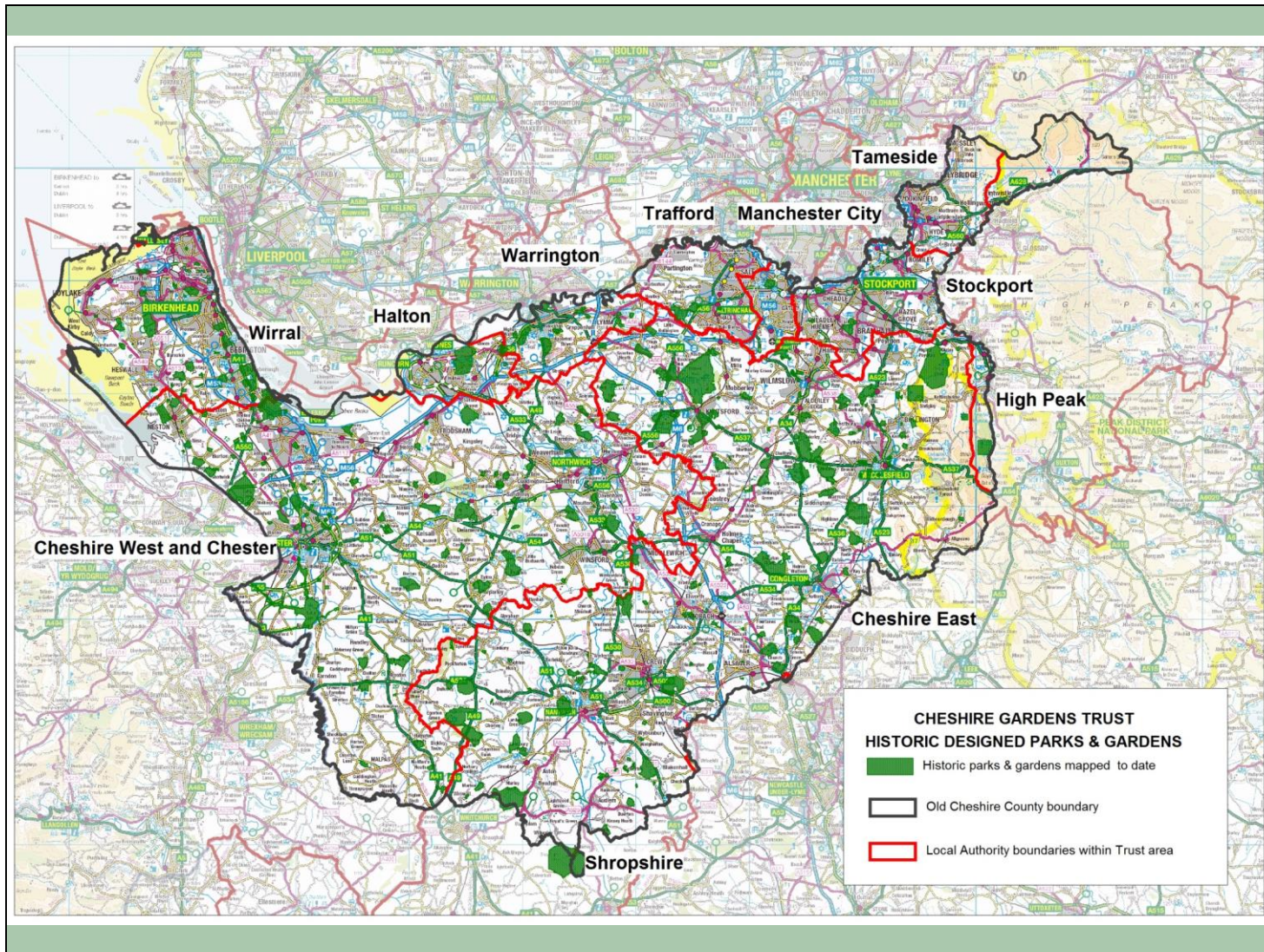
Historic Landscapes Assembly
Wednesday 17th November 2021

Supporting the Local Heritage List project

Barbara Moth and Dr James Dixon Built Environment Officer, Conservation and Design







Cheshire

34 Parks and Gardens on HE Register

400-500 non - designated P&G of which we have undertaken full research reports on 93 and short reports on 60.

Slide 5

CHESHIRE GARDENS TRUST				
<div>+</div> <div> <div>SITE NAME:</div> <div>Address</div> <div>Unitary Authority:</div> <div>Parish:</div> <div>Location:</div> <div>Grid Ref:</div> <div>Recorder:</div> <div>Date of Site Visit</div> <div>Date of Report:</div> </div>				
Significance				
Principal remaining features				
History (main periods of development/change, important events, people)				
Description (overview of the site-parkland, garden, etc; period/style- Georgian, Victorian, formal/natural, etc elements remaining and their condition, as observed)				
<p>Appended information/ additional notes (other sources not inspected; open/not open to the public; paintings/engravings of the site; public footpaths etc)</p> <p>Include any acknowledgements here without using names, e.g.</p> <p>We are grateful for the assistance of the owner/local history group/archivist in permitting access/ assisting with research.</p>				
Page 1 of 2				Site name

Include all sources in a series of endnotes

Endnotes
Author, initial. Date of publication. Title - in italics. Place of publication: publisher, page

Sample endnote
Mowl, T and Mako, M. 2008. The Historic Gardens of England: Cheshire. Bristol: Redcliffe Press Ltd, 161-163

Please note that this report contains the research and recording information available to Cheshire Gardens Trust at the time. It does not purport to be the finite sum of knowledge about the site as new information is always being discovered and sites change.

Copyright notice ©

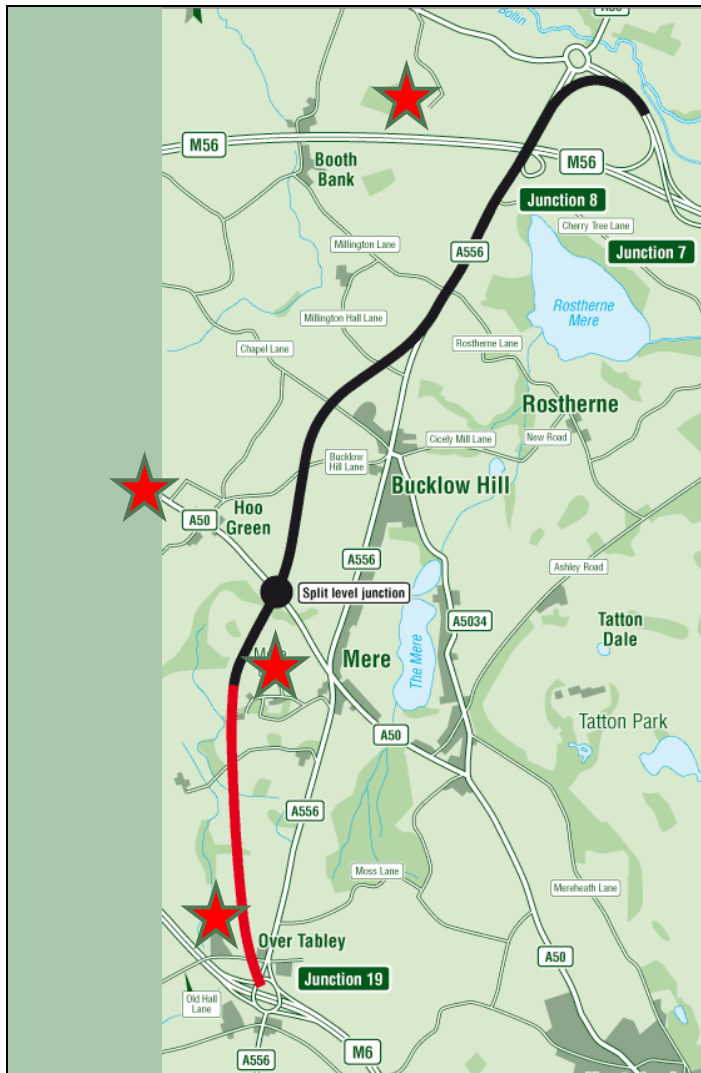
All rights reserved. This work is part of ongoing research by Cheshire Gardens Trust. No part of this work (text or illustrations) may be reproduced, stored in a retrieval system or transmitted in any form or by any means without prior permission from Cheshire Gardens Trust.

Page 2 of 2	Site name
-------------	-----------



Completed reports sent to

- Owner or custodian
- Local Authority
- Cheshire Historic Environment Record (CHER)
- Cheshire Archives and Local Studies (CALS)



Prioritising research Sites subject to change

**For example –
A556 Knutsford to Bowdon
Improvement**

The missing link between the M6 and M56



1721 Estate Map
Courtesy CALS ZCR 70/3/122

Agden Hall – Kemp garden



Over Tabley Hall
17th C walled garden

Meadowlands
T H Mawson?
Courtesy Gas Board



Old Mere Hall





Issues for non - designated sites

- Lack of resources to check weekly planning lists
- Sites not included on Local Authority mapping
- Ad hoc Notification of planning applications
- Dependent on planning officers awareness of CGT's activities
- Turnover of planning and conservation officers

How Cheshire Gardens Trust became involved in the Local Listing Project

Cheshire West and Chester Heritage Forum

4 times a year

Chaired by the Leader of the Council

Attended by Officers from planning, CHER, CALS

Local history groups, Chester Civic Trust, CGT,

Sandstone Ridge Trust and others

About a year ago the Local Listing Project was first mentioned in a presentation by Dr James Dixon and the question asked - Will this include historic designed landscapes?

YES – and before the meeting ended James emailed and the conversation went from there...

Cheshire Gardens Trust named as a partner in the local listing project.

We have been involved in

- Meetings
- Consultation on selection criteria
- Trialling the new website
- And a site visit is planned



Davenham Hall



Verdin Park



Bostock Hall