

**Recovery and regeneration: how
independent historic gardens are tackling
the pandemic**

Emma Robinson, Historic Houses

EXPLORE BRITAIN'S LIVED-IN

Historic Houses

MEMBERSHIP FROM £56

HUNDREDS OF HOMES, THOUSANDS OF STORIES

Free entry to over 320 special and beautiful homes and gardens across the UK.

Join at [historichouses.org](https://www.historichouses.org)



Slide 3



Slide 4



Holkham Hall

Slide 5



Slide 6

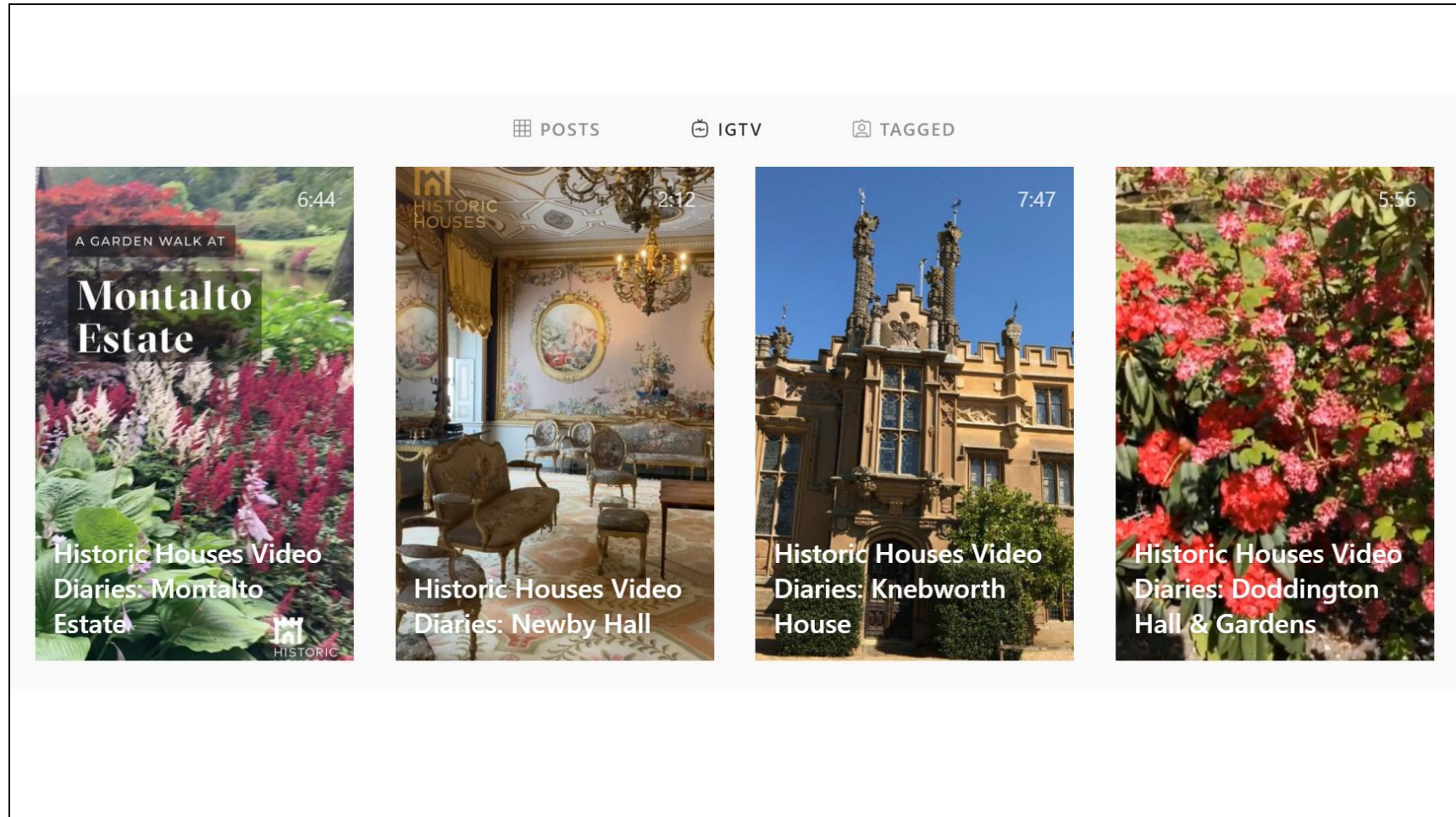














Burton Constable – the first visitors through the gate when lockdown ended in July.



Castle Howard, North Yorkshire



PLEASE RESPECT SOCIAL DISTANCING

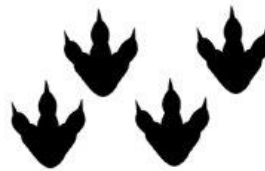
← What does 2m look like? →



← ONE SIKA DEER →



← TWO GARGOYLES →



← FOUR DINOSAUR FOOT PRINTS →





← ONE LUTYENS BENCH →







Newby Hall Gardens, North Yorkshire





17:01


← Tweet


 **Nigel Huddleston MP** 
@HuddlestonNigel


Had a wonderful visit to the stunningly beautiful [@ArleyHall](#) and gardens with local MP [@EstherMcVey1](#)

Great to see so many people out enjoying themselves safely in the Summer sunshine

[#EnjoySummerSafely](#)
[@MktgCheshire](#) [@DCMS](#)



Tweet your reply 



Slide 18





Easton Walled Gardens near Stamford, Lincolnshire



Deans Court – first organic garden in the country to be given a designation







Arley Hall

Hole Park













Mapperton Gardens won this year's Garden of the Year Award, following a popular vote. Mapperton's gardens recently starred in the Netflix adaptation of 'Rebecca'.



Thank you

historichouses.org

@Policy_Emma

