

Research for our site: Stockgrove Park



thegardenstrust.org

[@thegardenstrust](https://twitter.com/thegardenstrust)

Stockgrove Park timeline:

- Pre-C15 Park situated on 3 manors – Leighton Buzzard, Stewkley & Smewnes
- 1792 Stockgrove Park (c. 45 acres) formed out of Stockgrove Farm lands by Edward Hanmer, new house built
- 1816-18 Estate extension (6.5 acres) to north east into Rammamere Heath
- 1828 Col. Henry Hanmer inherits from his uncle
- 1831 Stockgrove House remodelled and over rest of C19 estate grows to 1,700 acres
- 1852 More land to the west bought off Leigh Family and new carriage drive to Rushmere formed
- 1902 Estate sold to Joseph Trueman Mills who retired to here, added to planting along main carriage drive
- 1928 Sir Ferdinand Michael Kroyer-Keilberg buys estate and demolishes Hanmer's house and rebuilds new house, N & S Lodges and boathouse (by Green). New formal gardens laid out, avenue planted across The Bomes and new serpentine lake formed
- 1939-45 Mansion used by ATS, grounds used for practising trench and battlefield techniques. German prisoners of war dug trenches for first electricity cable
- 1940s Conifer (mainly Scots Pine) planting in south-west corner of park
- 1949 Leslie Neville-Long buys estate and mansion sold to London C.C. for a school
- 1971 Beds C.C. (& Bucks) bought 3 lots of land and formed Stockgrove Country Park
- 1996 School closed and buildings divided into domestic units



thegardenstrust.org

[@thegardenstrust](https://twitter.com/thegardenstrust)

Basic timeline from internet searches



Google Earth – aerial photograph of Stockgrove Park



 @thegardenstrust

Photographs and images that were also shown are listed below.

Gordon's Map, 1736, photograph of a copy held at BARS

Thomas Jefferys, Map 1765, photograph of a copy held at BARS

Bryant's Map, 1825/26, photograph of a copy held at BARS

Sales Catalogue 1896, photograph of a copy held at BARS

Tithe Map, 1827, held at BARS

1947 Aerial survey photograph courtesy of Hunting Surveys Ltd.

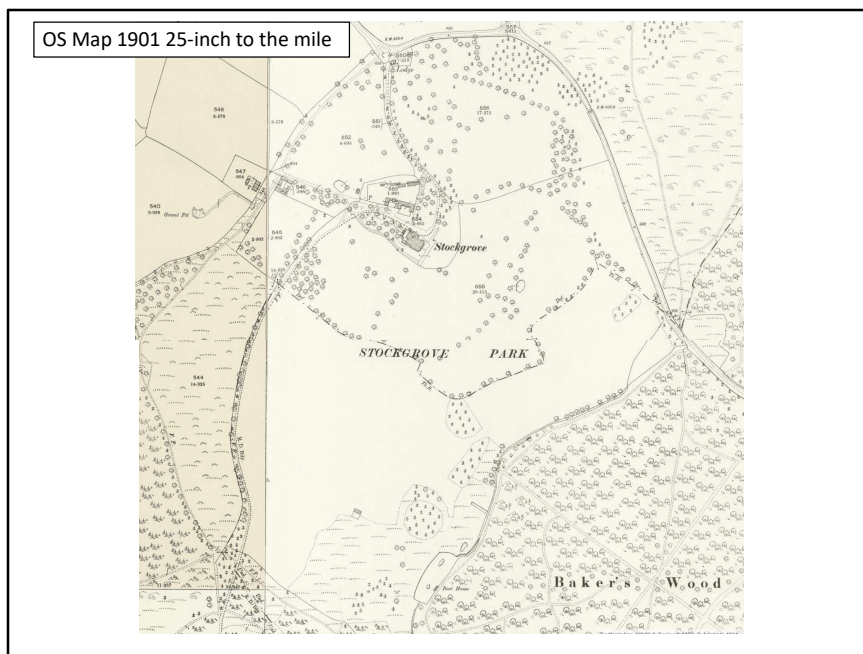
Mansion built for Edward Hanmer by Decimus Burton from 1926
Sale Particulars.



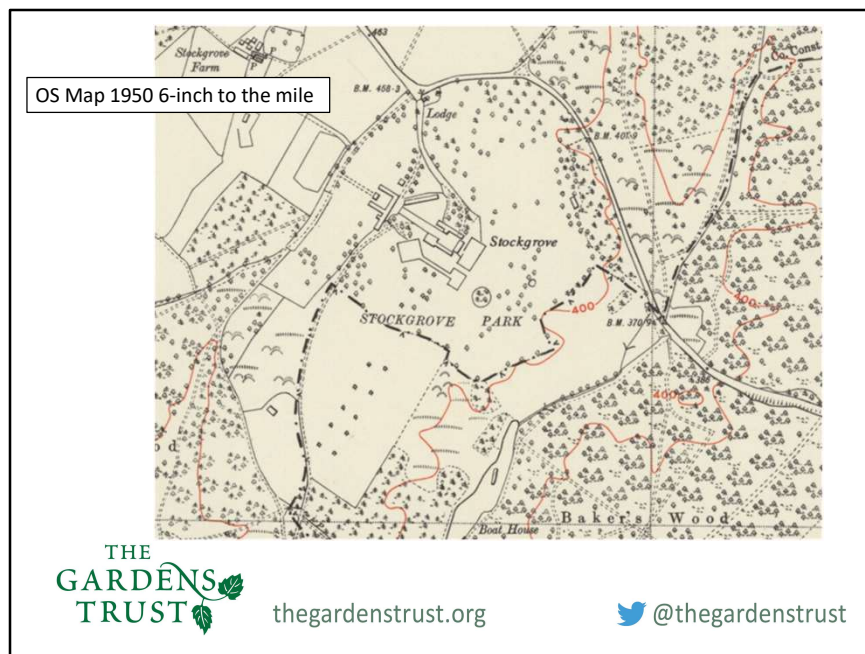
thegardenstrust.org

 [@thegardenstrust](https://twitter.com/thegardenstrust)

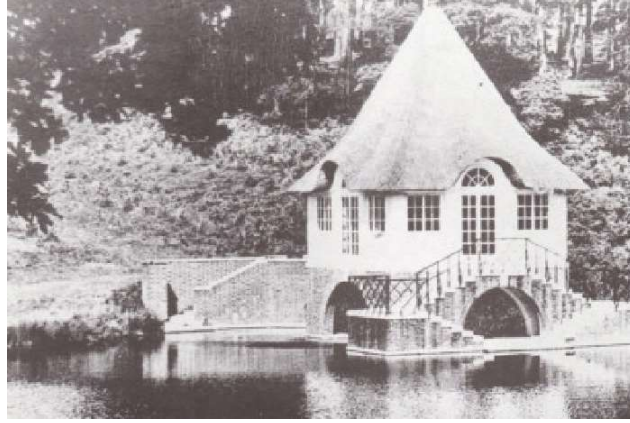
In accordance with BARS regulations, I have not reproduced here the photos we looked at in our workshops, but the items can be easily produced on a visit to the archives for you to make your own copies or take photographs.



National Library for Scotland OS maps, online



National Library for Scotland OS maps, online



Stockgrove thatched boathouse photograph
Leighton Buzzard Observer – online website



Courtesy of Leighton Buzzard Observer

@thegardenstrust

sallybate@thegardenstrust.org

<http://bit.ly/facebookGT>

www.thegardenstrust.org



thegardenstrust.org

 @thegardenstrust