



# **KENT GARDENS TRUST RESEARCH GROUP**



**1. What we have achieved**

**2. How we went about it**

**3. Problems – only a few**

# The Kent Garden Compendium

Commenced in 1988 and revised in 1996 in conjunction with Kent County Council.

3 volumes.



**In 2008 it was decided to  
carry out a further revision**

**Tunbridge Wells (27)**

**Sevenoaks (20)**

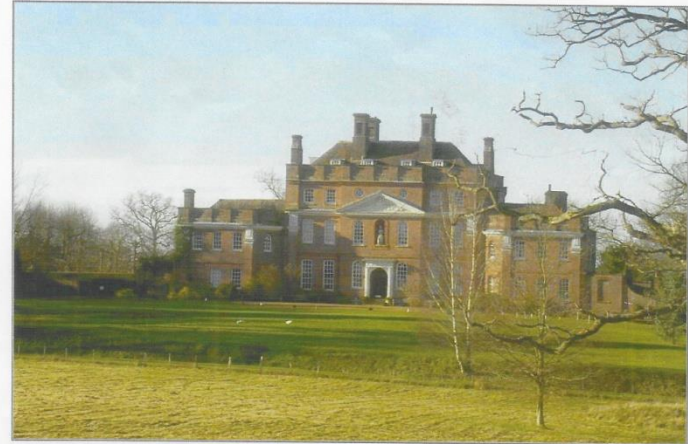
**Medway (27)**

**And now Dover**

**Extra sites in Margate  
and Lamberhurst**

DOCTOR & MRS. R. H. C. VAUX  
GREENHILL HOUSE  
OTHAM, MAIDSTONE  
KENT ME15 8RR  
Telephone (01522) 861245

The Kent Compendium of Historic Parks and Gardens  
for Tunbridge Wells Borough



Finchcocks, Goudhurst

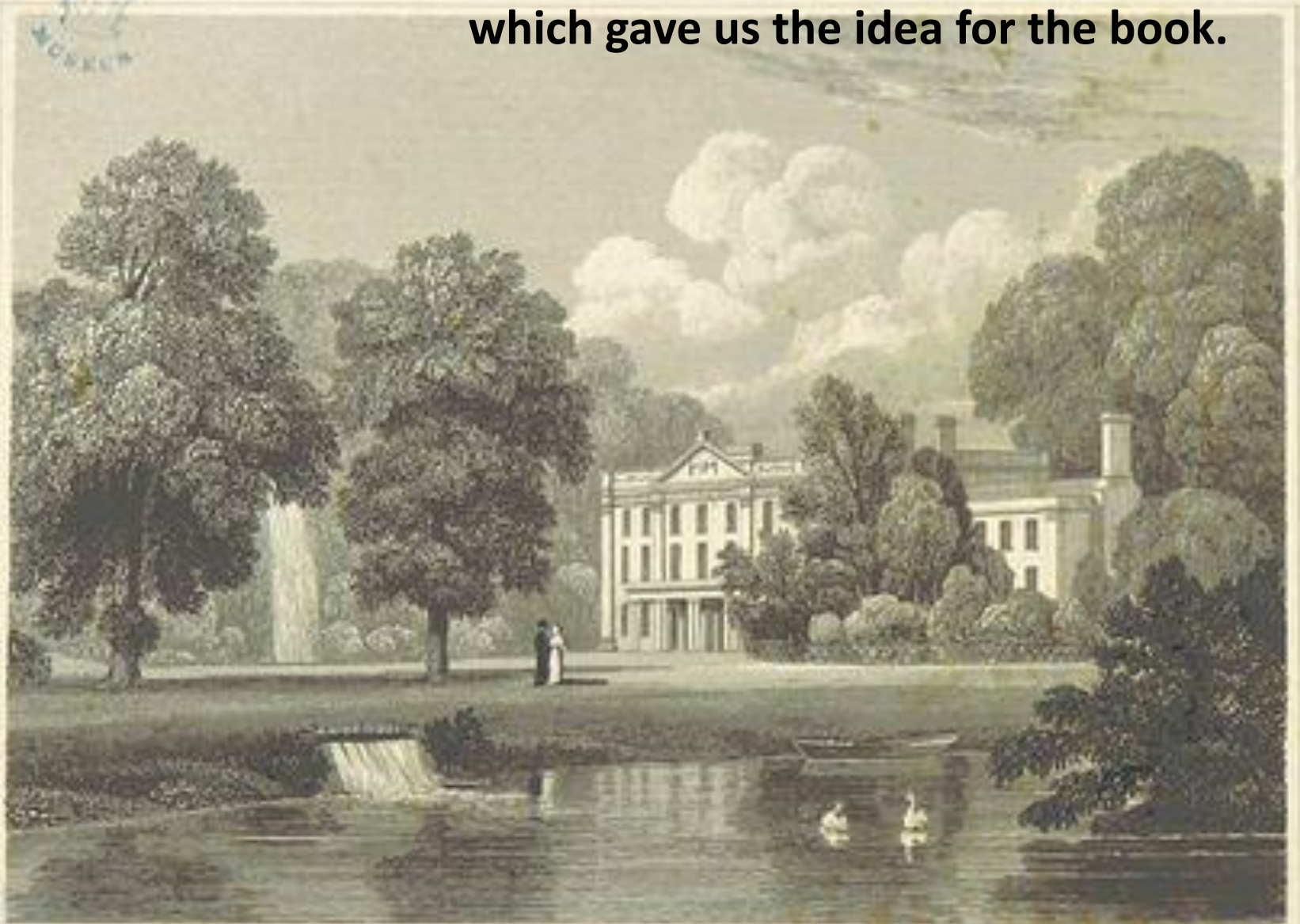


December 2008



**VALENCE.**

**The first Capability Brown site we surveyed  
which gave us the idea for the book.**



Drawn by J. J. Neale

**HILL PARK,**  
KENT

Engraved by T. J. G. Ham

1847

**In May 2016 we  
published**

**‘Capability Brown in  
Kent’.**

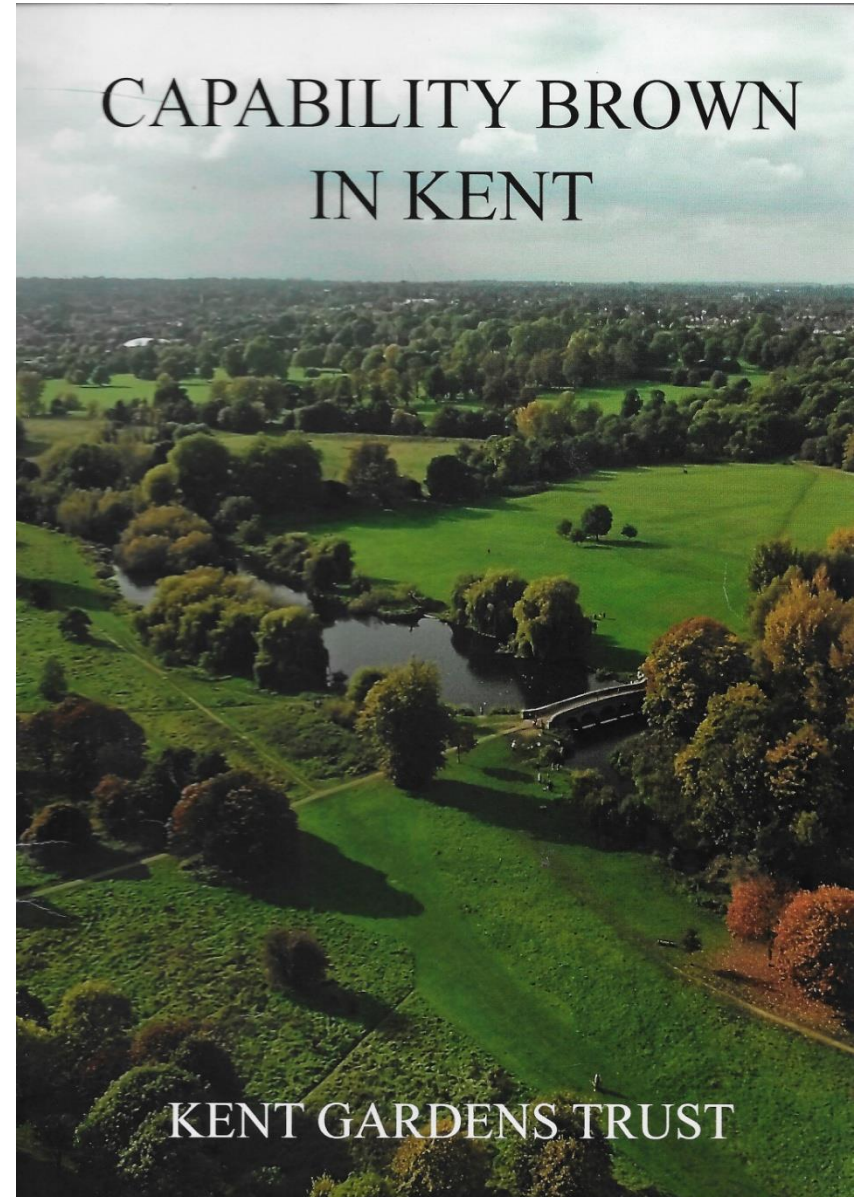
**Chilham Castle**

**Leeds Abbey**

**Ingress**

**Valence (Hill Place)**

**North Cray Place**



# **The reports were laid out in English Heritage format**

- 1. Summary and Statement of Significance**
- 2. Chronology of Historic Development**
- 3. Description of Site**
- 4. References**
- 5. Images**

## What did we do with the reports?

**Published them in paper format  
and on KGT website**

**Nearly all are on the Parks and  
Gardens UK data base.**

## What have they been used for?

- 1. A source of information which is available to everyone**
- 2. Planning permission**
- 3. Grant applications**
- 4. Local listing**
- 5. Basis of other publications eg Medway booklet**





# How did we go about it?



1. **Initial enthusiasm** of Tunbridge Wells BC, Kent CC and KGT and our trainers
2. **Spreading the word and recruiting volunteers**
3. **Training** . Formal sessions, example and mentoring.
4. **Into action.**

Part of the cloister gardens  
at Rochester Cathedral



**Kent HER packs.** Maps, listing, aerial photos, previous compendium entry

**Collecting information.** Owners, Internet, local societies, record offices

**Visiting the site.** Walking, recording and photographing

**Collating info and writing drafts**

**Editing**

**Final draft**

**Compilation into pdf file with images by Kent HER**

**Publish.** Paper and on line

**Entry on Parks and Gardens UK website**













## **PROBLEMS**

**Finance**

**Owner consent**

**Copyright**

**Communication with local authorities**

**Volunteers**

# FINANCE

## Needed for?

Running study days

Paying editor

Publishing - including website

Volunteers expenses

## Where from?

Grants and donations

KGT funds

The time given by volunteers

## **FUNDING OF REPORTS**

from

English Heritage

Kent County Council

Tunbridge Wells Borough  
Council

High Weald Advisory  
Committee

Sevenoaks District Council

Medway Council

Dover District Council

Thanet District Council

## **FUNDING OF BOOK**

from

Historic Houses Association

Kent Archaeological Society

Rochester Bridge Trust

John Swire 1989 Charitable Trust

Roger de Haan Charitable Trust

Stanley Smith (UK) Horticultural  
Trust



Dear

**Kent Gardens Trust Historic Gardens Research Project**

# LETTER OF CONSENT

**Name of Garden:**

We are very grateful to you for allowing us to have access to your garden for the purposes of our research project. We hope that you will find the results interesting.

The purpose of the project is to discover more about the historic parks and gardens in Kent and record our findings in order to provide the best possible protection for them in future years. This will involve writing up our research and publishing it in hard copy which will be available to local planning authorities and to researchers in libraries. It will also be accessible on line on your local authority website.

We would like to include photographs and other images of your garden in our report and would be most grateful if you could give your permission for this by selecting **Yes** or **No** in answer to the statements below.

•I agree that Kent Gardens Trust may take photographs of the garden and include them in their report

•**Yes/No**

I agree that the maps, plans, paintings, drawings and other images listed on the attached sheet which are owned by me/us may be photographed and included in the report

•**Yes/No**

Kent Gardens Trust may wish to include the report on your garden on their website and submit the information we have obtained including some images to the Parks & Gardens UK database and website. This will increase wider understanding and appreciation of the history of parks and gardens.

Please indicate if you agree to this.

•I agree to the report on our garden being included on the Kent Gardens Trust website

•**Yes/No**

I agree that Kent Gardens Trust may submit the report to be included on the Parks & Gardens UK database and website

•**Yes/No**

The Parks & Gardens UK database is a free source of information about historic parks, gardens and green spaces in the UK. For more information please visit its website: [www.parksandgardens.ac.uk](http://www.parksandgardens.ac.uk)

**Signed**

**Date**

## 9.1 Charts for the duration of copyright

# COPY RIGHT FLOW CHART

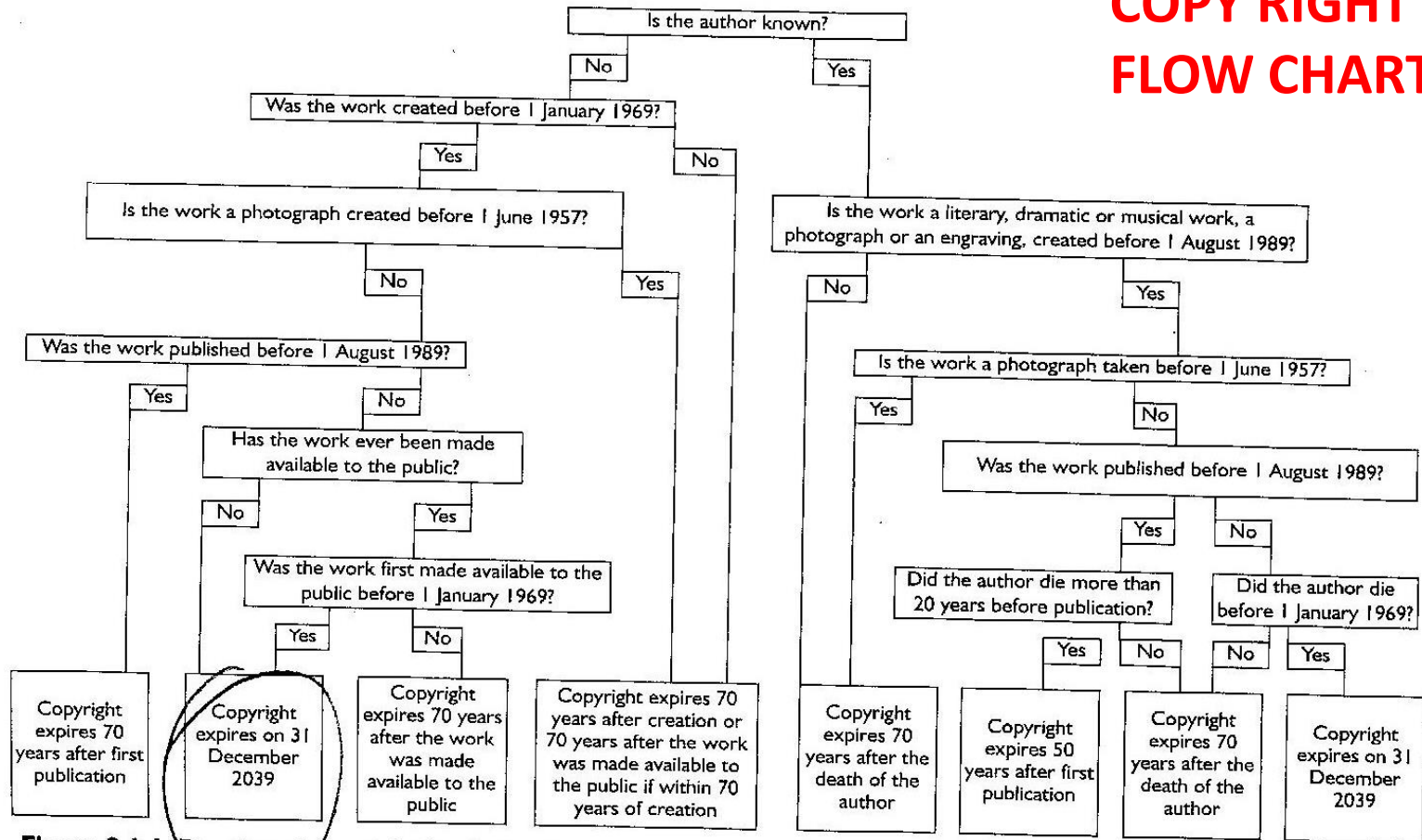


Figure 9.1.1 Duration of copyright (excluding Crown copyright): literary, dramatic, musical and artistic works

Most  
Manuscripts

Was the work created before 1 August 1989?

## **Communication with local authorities**

Some more enthusiastic than others

Those you are dealing with change jobs

## **Volunteers**

Integrating new volunteers – mentoring

Very occasionally one gives up but another takes over

**But almost everyone finds the  
whole process of being a garden  
detective**

**is addictive**

**and above all fun**

**(even the writing up)**