



**'Stealing the cherry off the cake'**

**Protecting historic parks and gardens**

**David Lambert**



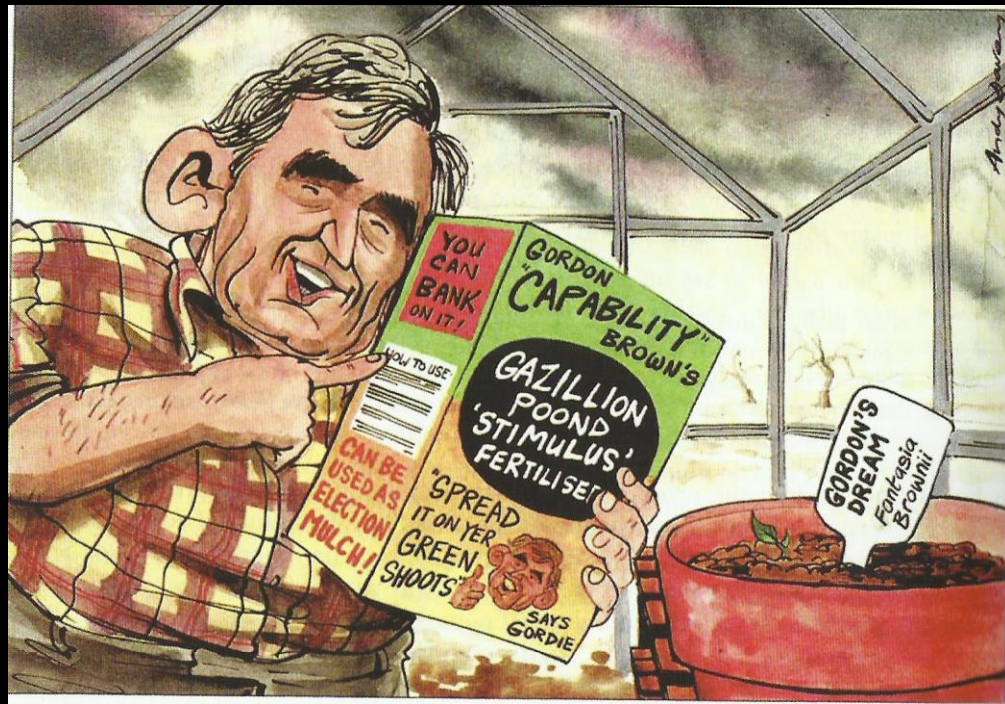








LXXVII R



Lancelot 'Capability' Brown—  
1715-1783, whose landscape  
gardens at Blenheim, Kew and  
elsewhere reflect the "capabilities"  
he saw in them.

## Underwriting History

Like many other famous people Lancelot 'Capability' Brown entrusted his insurance affairs to the care of the Sun Insurance Office.

For more than two and a half centuries the Sun has made its own contribution to the country's commercial history. Today both private persons and well-known companies still turn to the Sun for protection against loss and for expert advice on all insurances.



**SUN INSURANCE  
OFFICE LIMITED**

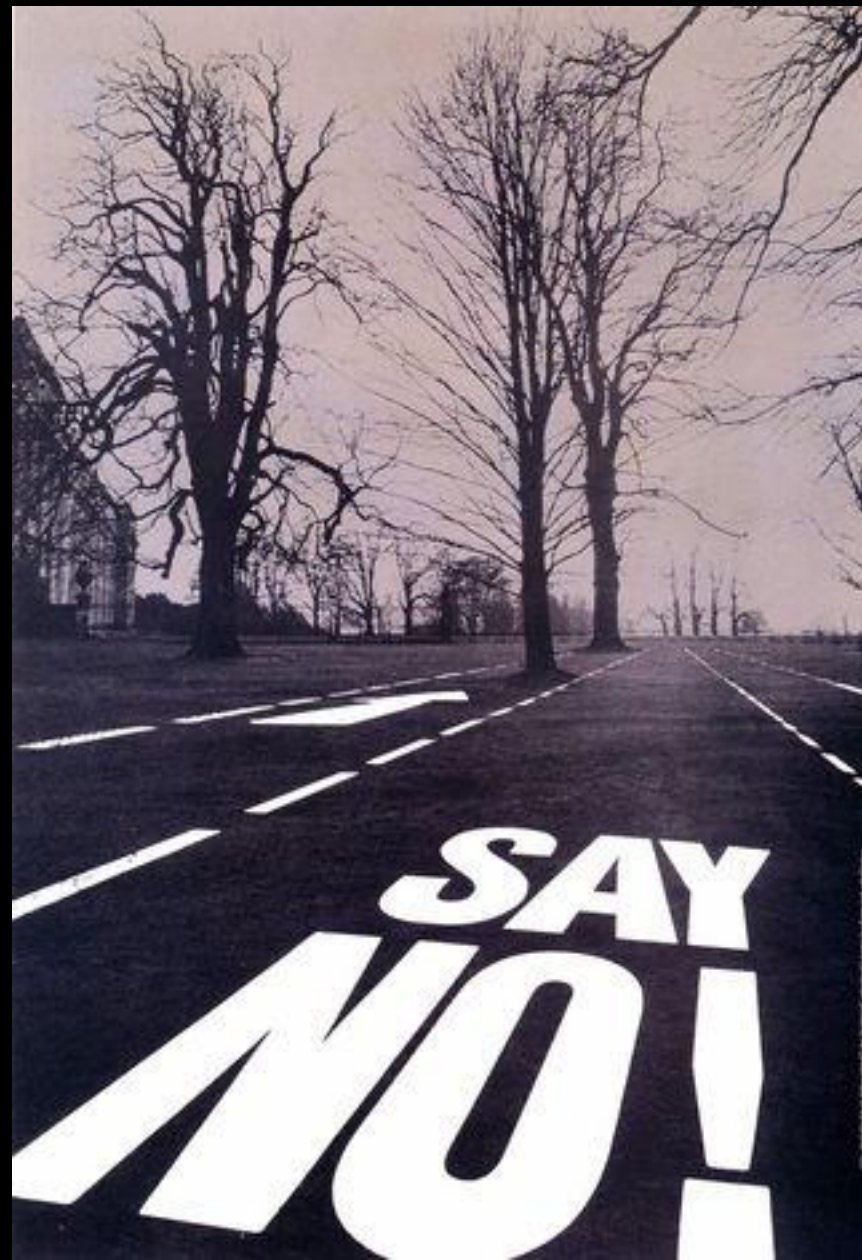
63 THREADNEEDLE STREET,  
LONDON, EC2

See the Telephone Directory for your local branch or office



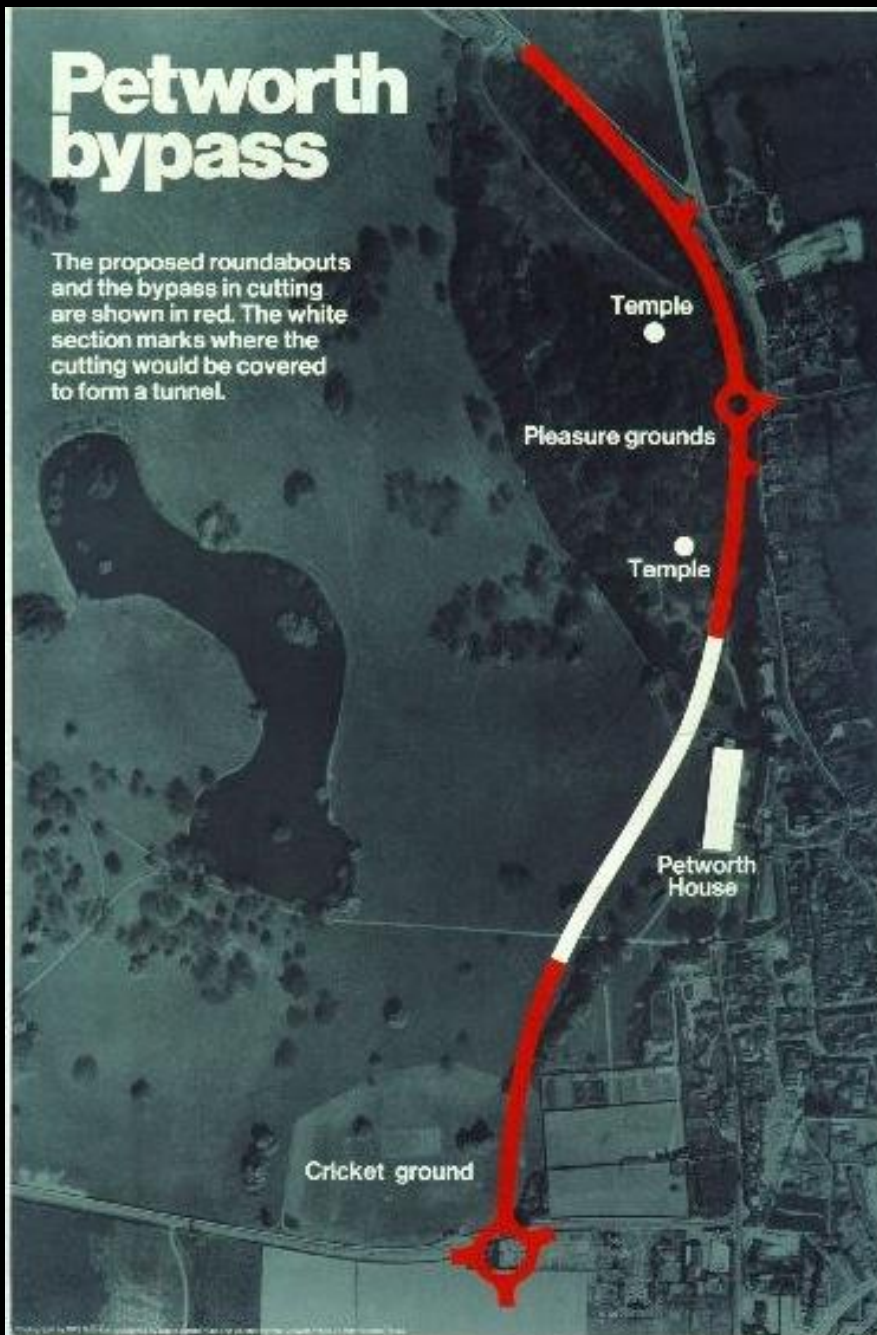




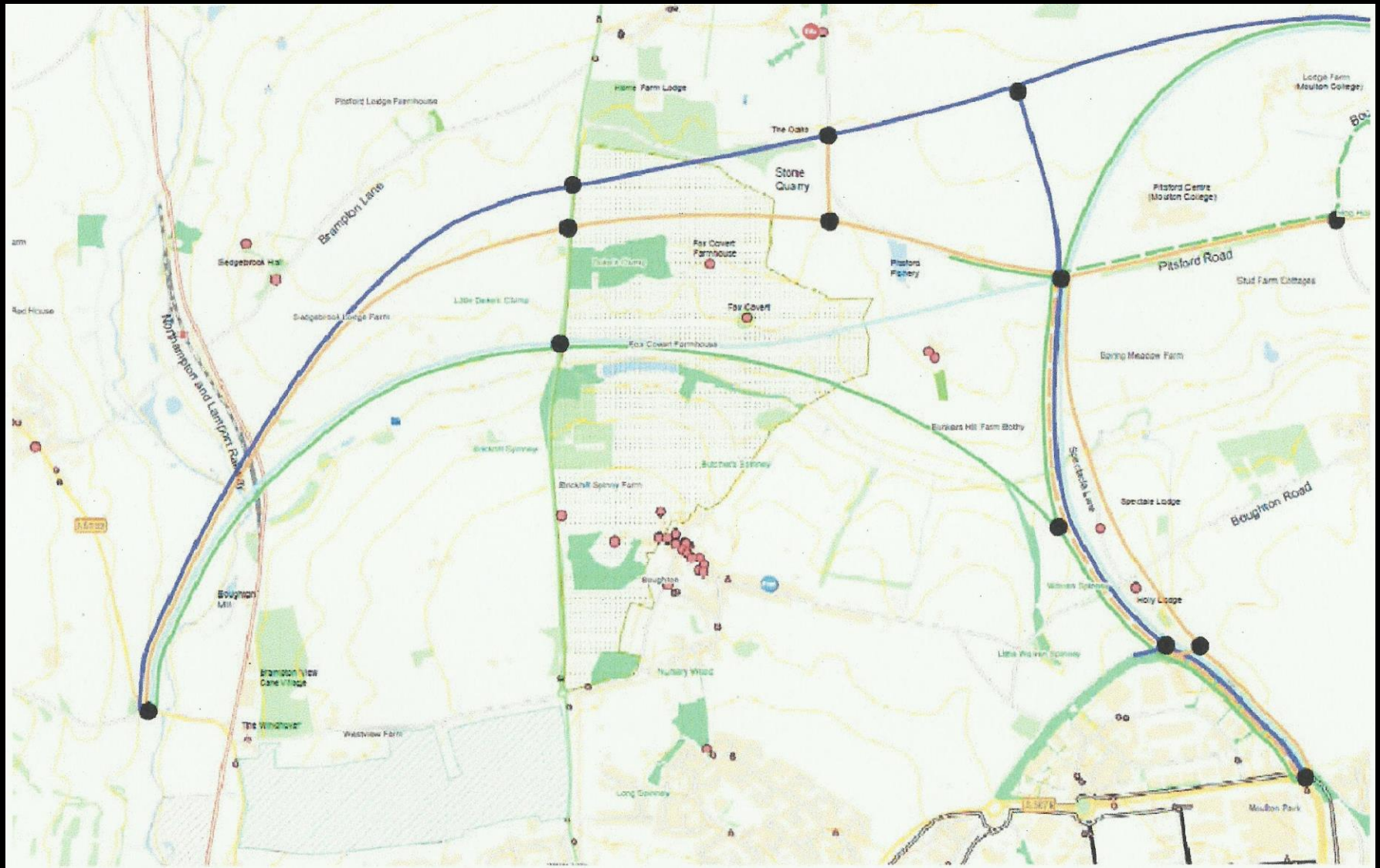


# Petworth bypass

The proposed roundabouts and the bypass in cutting are shown in red. The white section marks where the cutting would be covered to form a tunnel.

















Flat ground  
on the top of the Hill.

The top of the Hill is  
a Flat plain

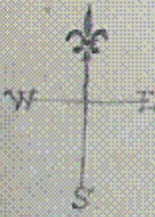
The bottom of the  
Valley is a Brook

Plain or Meadow

Cole Green House  
A

Parshanger House

NB. This PLAN is merely to show the Shapes of Ground  
with some of the masses of Wood & situations for a House.





EAST

Repton's Lower Broadwater

Island & weir

Tarmac's lagoon

strip of gravel that Tarmac plans to remove

Repton's Upper Broadwater

WEST

David Neal

The site of Cole Green Parkland today



Before the fence...



...and after.



06/01/2015 09:14



4. The masterplan proposal should be underpinned by sustainable development principles to ensure the long-term viability of the development, including a green travel policy and measures to mitigate the potential for localised flooding.

5. New development should recognise the significance of the existing landscape; heritage and archaeological context, by proposing new development which makes a positive contribution to the location.

**Lawrence Hall**  
Leased to the Secretary of State.

**Field Sports for Community Use**  
A new University sports hub which will include new outdoor sports facilities supported by a fully serviced club house for use by the University and the local community.

**University of Lincoln Research Centre**  
Retained University use of Riseholme Hall for continued education purposes and administrative base for Lincoln Institute for Agri-Technology

**Lincoln Institute for Agri-Technology**  
A working arable and livestock farm committed to sustainable farming practices, incorporating an innovation centre to pioneer new approaches to Integrated Farm Management (IFM) through research and development, and demonstrate best practice. Typical research would include crop nutrition, soil management, energy innovation, agri-food and bio-science. A current example, driven by the (EU) Sustainable Use Directive, is the research into the impact of farming practice on surface and ground water quality. Supported by the Environment Agency, ground water monitoring is due to be increased to a depth of 20m by the use of bore holes at Riseholme.















The image is a screenshot of the Warwick Castle website. At the top left, the Warwick Castle logo is displayed in a blue banner with the text "WARWICK + CASTLE + & KNIGHT'S VILLAGE". To the right of the logo are social media icons for Facebook, Twitter, and Instagram, and a search bar with the text "Search for...". Below the logo is a navigation menu with the following items: Home, Explore, Plan a visit, Events, Accommodation, and Offers & Booking. The main content area features a large image of the Knight's Village at night, with wooden log huts and people walking around. Overlaid on this image is a promotional banner for "KNIGHT'S VILLAGE SHORT BREAKS NOW ON SALE!" with a green button that says "EXPLORE THE KNIGHT'S VILLAGE >". At the bottom of the page, there is a white banner with the text "Explore Warwick Castle, where you'll be surrounded by jaw-dropping history, magic, myth and adventure!" and a "Leave Feedback" link. To the right of this banner are two buttons: "Short Breaks" and "Castle Tickets", and a larger yellow banner that says "Save up to 20% on".

WARWICK + CASTLE + & KNIGHT'S VILLAGE

English

f t

Search for...

Home Explore Plan a visit Events Accommodation Offers & Booking

KNIGHT'S VILLAGE  
SHORT BREAKS NOW ON SALE!  
EXPLORE THE KNIGHT'S VILLAGE >

Explore Warwick Castle, where you'll be surrounded by jaw-dropping history, magic, myth and adventure!

Short Breaks Castle Tickets

Save up to 20% on

Leave Feedback













[www.timwoodgallery.com](http://www.timwoodgallery.com)













## View 4

### Southern approach to Warwick

Warwick Technology Park, located here, behind earth mounds and heavy landscaping was carefully landscaped and is successfully obscured preventing its visual intrusion into this "rural" landscape

Just imagine – the forest of street lights from the proposed park and ride lining the crest!

Strawberry Field – a major element in the landscape on the southern approach to Warwick and the setting of Warwick Castle





**SAY NO**

TO

**KEDLESTON ESTATE  
DEVELOPMENT**

**400 HOUSES ON  
HERITAGE FARMLAND**



VISIT  
[www.kedlestonvoice.com](http://www.kedlestonvoice.com)























Welcome to  
The Town Gardens

These gates are locked at  
[ ] pm

Please keep all dogs on leads













